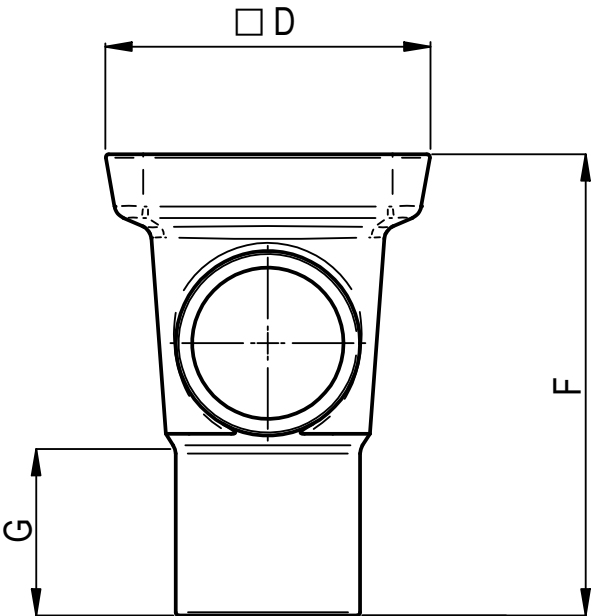
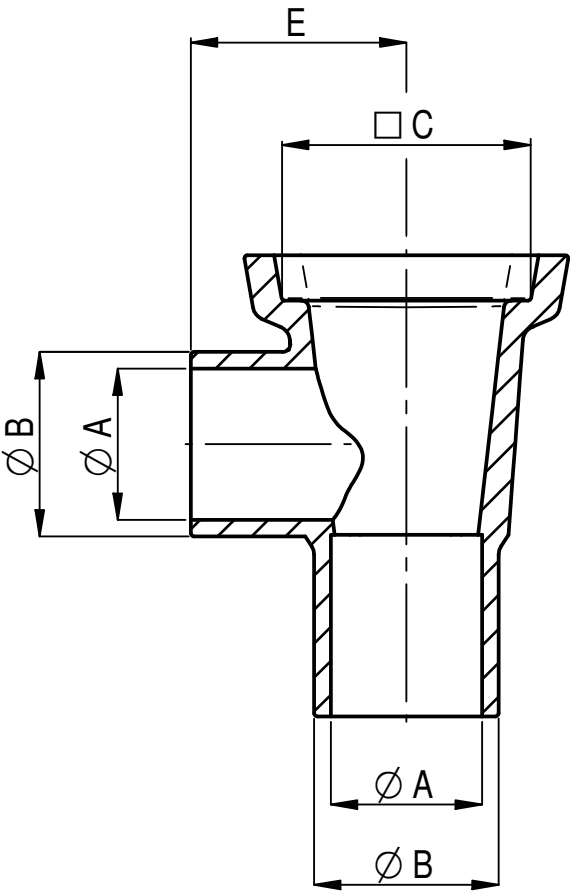


NAT K154b (WITH HORIZONTAL INLET)




ISOMETRIC VIEW

KSH2 USES 150mm SQUARE GRATE OR SEALING PLATE
KSH3 USES 225mm SQUARE GRATE OR SEALING PLATE


CODE No.	A	B	C	D	E	F	G	WEIGHT (Kg)
KSH2	100	122	165	215	142	305	110	4.40
KSH3	150	178	242	280	210	370	90	9.80

ALL DIMENSIONS IN mm



THIS DRAWING IS THE PROPERTY OF WT KNOWLES & SONS LTD
AND MUST NOT BE USED IN ANY WAY PREJUDICIAL TO THEIR INTERESTS

± 5% TOLERANCE TO BE APPLIED ON ALL DIMENSIONS

WEIGHT =	DRAWN: GB 07-01-10	SCALE	PROJECTION
DO NOT SCALE	ISSUE: 4 25-03-19	1:5	

TITLE :-
**SQUARE HOPPER T.W
WITH HORIZONTAL INLET**

DRAWING No. :- KSH2	A4
-------------------------------	-----------