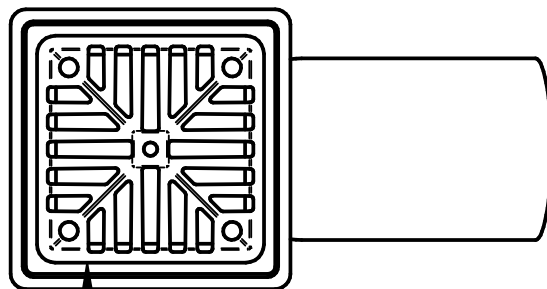
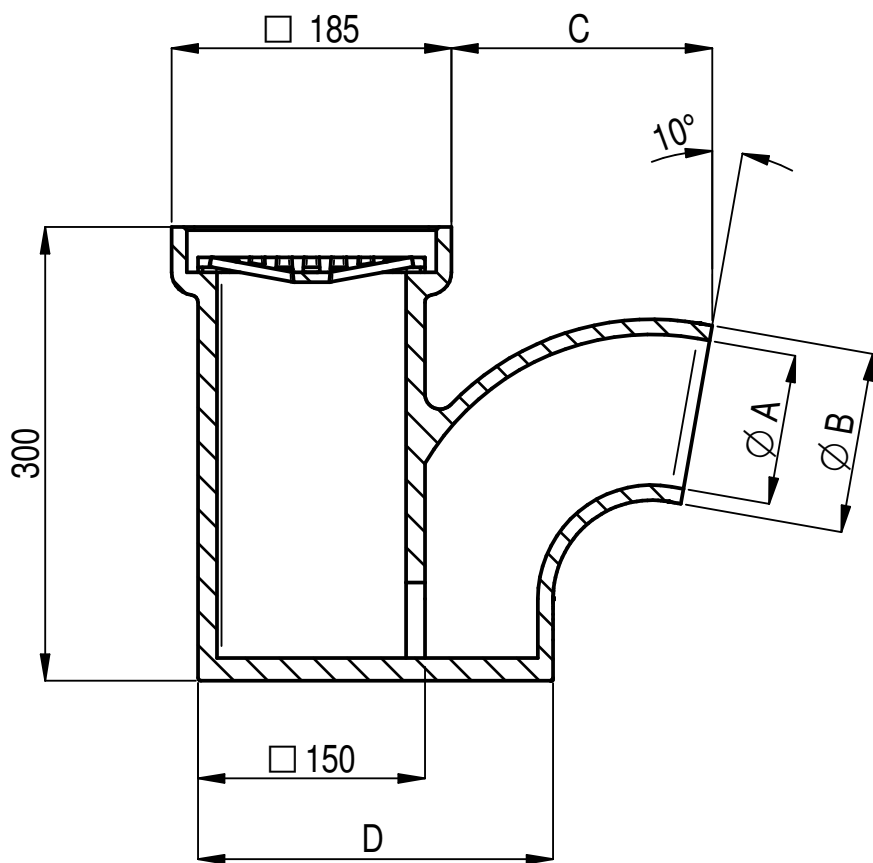


NAT K169 (P OUTLET - THIN WALL)



CAST IRON SQUARE GRATE




ISOMETRIC VIEW  
1:10

CODE No.	A	B	C	D	WEIGHT (Kg)
KSG2/1	100	130	172	235	8.00
KSG2/2	150	178			13.00


COMPLETE WITH CAST IRON SQUARE GRATE 150 x 150 (6" x 6") CODE KIG2C

ALL DIMENSIONS IN mm



THIS DRAWING IS THE PROPERTY OF WT KNOWLES & SONS LTD  
AND MUST NOT BE USED IN ANY WAY PREJUDICIAL TO THEIR INTERESTS

± 5% TOLERANCE TO BE APPLIED ON ALL DIMENSIONS

WEIGHT =	DRAWN: GB	22-02-10	SCALE	PROJECTION
DO NOT SCALE	ISSUE: 2	31-03-19	1:5	

TITLE :-  
**SQUARE GULLY**

DRAWING No. :- <b>KSG2</b>	<b>A4</b>
-------------------------------	-----------