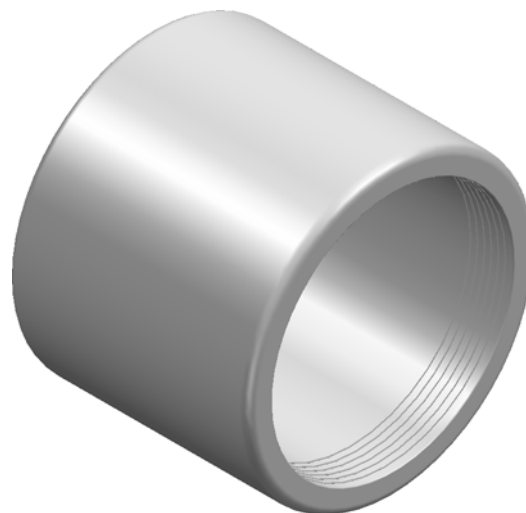


Loose collar is designed to fit over the outside diameter of the pipe and then cemented in place to make a permanent repair



ISOMETRIC VIEW

To Suit Pipe	CODE No.	A	B	E	WEIGHT (Kg)
4"	KRLC1	145	185	150	3.25
6"	KRLC2	210	245	180	9.75
9"	KRLC3	300	350	225	16.65
12"	KRLC4	375	445	225	27.25

ALL DIMENSIONS IN mm

GLAZED FINISH AVAILABLE ON REQUEST



THIS DRAWING IS THE PROPERTY OF WT KNOWLES & SONS LTD
AND MUST NOT BE USED IN ANY WAY PREJUDICIAL TO THEIR INTERESTS

TITLE :-

LOOSE COLLAR

WEIGHT =

DRAWN: GB 05-01-10

SCALE

PROJECTION

DRAWING No. :-

KRLC

A4

DO NOT SCALE

ISSUE: 5 20-12-20

1:5

